

# Airport Statistics

## Phoenix Sky Harbor International Airport

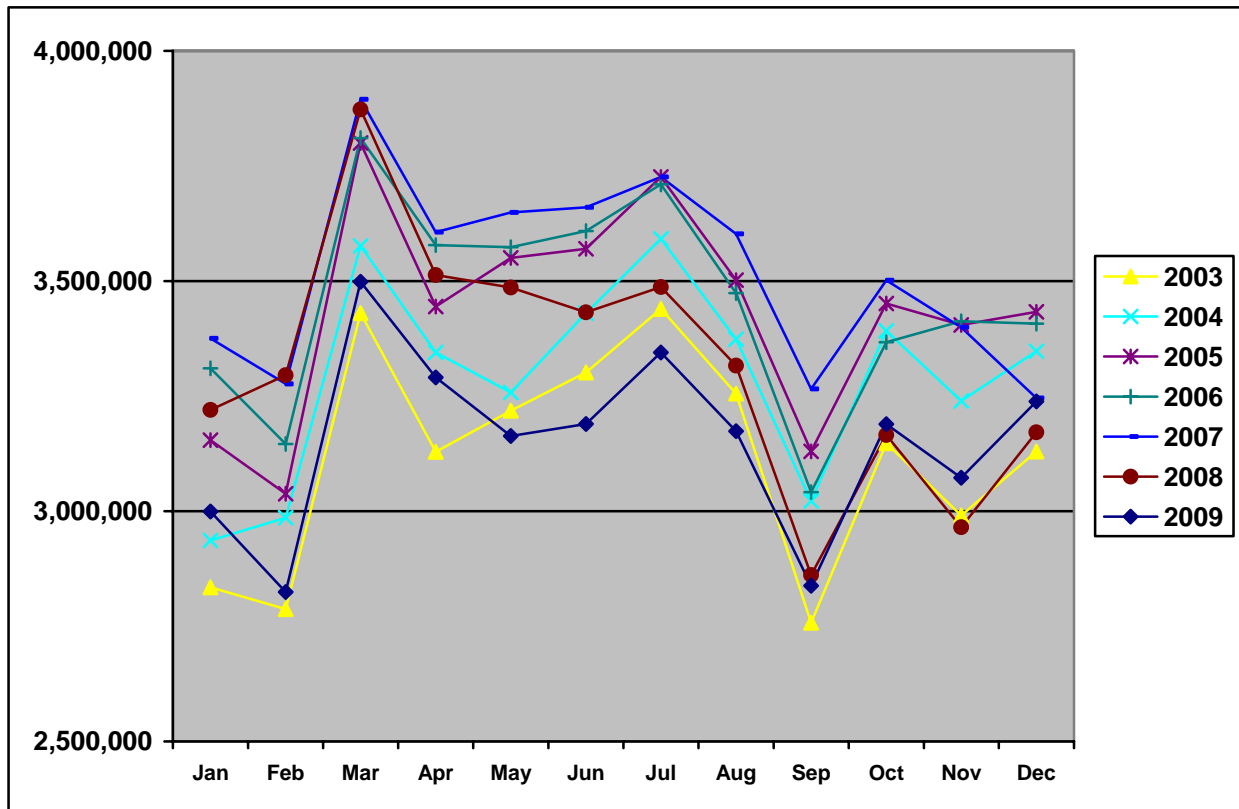
### Airport Facts

- Phoenix Sky Harbor International Airport ranks as the ninth busiest airport in the world for aircraft operations.
- Sky Harbor ranks as the ninth busiest U.S. airport and the 17th busiest airport in the world for passenger traffic.
- Sky Harbor supports nearly 1,500 takeoffs and landings daily.
- Sky Harbor is serviced by 19 commercial airlines and seven air cargo carriers.
- Sky Harbor has a \$90 million daily economic impact.
- Sky Harbor serves nearly 100 domestic and 13 international cities with daily flights, most of them nonstop. International service includes flights to the United Kingdom, Canada, Costa Rica and Mexico.

### Airport Rental Car Charges

| Description                                                                                                                                 | Amount                                                            | Airport Only Charges | All Local Companies Charge |
|---------------------------------------------------------------------------------------------------------------------------------------------|-------------------------------------------------------------------|----------------------|----------------------------|
| <b>City of Phoenix Privilege License Tax</b> – liability is on the vendor, but they can pass on to the customer if they choose              | 4.0%                                                              |                      | X                          |
| <b>Arizona Transaction Privilege Tax</b> – same as above, but from the state                                                                | 5.6%                                                              |                      | X                          |
| <b>Maricopa County Tax</b> – same as above, but from the county                                                                             | 0.7%                                                              |                      | X                          |
| <b>State Auto License Fees</b> – state charges and passes on to renter                                                                      | 5.0%                                                              |                      | X                          |
| <b>Maricopa County Rental Car Surcharge</b> – goes to Tourism & Sports Authority to fund Arizona Cardinals stadium                          | \$2.50/contract or 3.25% of gross proceeds (whichever is greater) |                      | X                          |
| <b>Rental Car Company Airport Concession Recovery Fee</b> – liability is on the vendor, but they can pass on to the customer if they choose | 10% of their gross sales as rent to airport (up to 11.11%)        | X                    |                            |
| <b>Customer Facility Charge</b> – pays for the construction, maintenance and future capital improvements of the new Rental Car Center       | \$6.00/day                                                        | X                    |                            |

## Total Passenger Traffic



## Phoenix Sky Harbor International Airport – Total Passenger Traffic

|                    | 2003              | 2004              | 2005              | 2006              | 2007              | 2008              | 2009              |
|--------------------|-------------------|-------------------|-------------------|-------------------|-------------------|-------------------|-------------------|
| <b>Jan</b>         | 2,834,808         | 2,936,387         | 3,154,466         | 3,310,363         | 3,375,510         | 3,220,307         | 2,999,552         |
| <b>Feb</b>         | 2,787,722         | 2,985,842         | 3,038,182         | 3,146,086         | 3,276,621         | 3,295,273         | 2,824,825         |
| <b>Mar</b>         | 3,430,332         | 3,576,506         | 3,799,760         | 3,810,342         | 3,894,704         | 3,872,745         | 3,498,397         |
| <b>Apr</b>         | 3,129,194         | 3,344,797         | 3,444,413         | 3,578,243         | 3,606,348         | 3,513,114         | 3,290,532         |
| <b>May</b>         | 3,218,378         | 3,258,036         | 3,550,168         | 3,573,731         | 3,649,151         | 3,486,012         | 3,163,737         |
| <b>Jun</b>         | 3,301,470         | 3,430,314         | 3,570,023         | 3,608,776         | 3,660,192         | 3,431,977         | 3,189,822         |
| <b>Jul</b>         | 3,439,197         | 3,591,777         | 3,726,031         | 3,709,773         | 3,725,800         | 3,486,964         | 3,344,775         |
| <b>Aug</b>         | 3,255,811         | 3,373,538         | 3,502,098         | 3,473,887         | 3,602,595         | 3,316,110         | 3,174,009         |
| <b>Sep</b>         | 2,758,216         | 3,022,417         | 3,130,240         | 3,041,533         | 3,265,912         | 2,861,437         | 2,838,459         |
| <b>Oct</b>         | 3,147,895         | 3,391,626         | 3,451,033         | 3,367,020         | 3,501,614         | 3,165,766         | 3,189,323         |
| <b>Nov</b>         | 2,990,789         | 3,239,654         | 3,404,530         | 3,412,552         | 3,399,292         | 2,965,180         | 3,072,834         |
| <b>Dec</b>         | 3,129,784         | 3,347,436         | 3,433,127         | 3,407,513         | 3,246,141         | 3,171,614         | 3,238,717         |
| <b>Year Total*</b> | <b>37,423,596</b> | <b>39,504,898</b> | <b>41,204,071</b> | <b>41,439,819</b> | <b>42,203,880</b> | <b>39,786,499</b> | <b>37,824,982</b> |

\*Total passenger traffic for Phoenix Sky Harbor International Airport in 2002 was 35,547,432

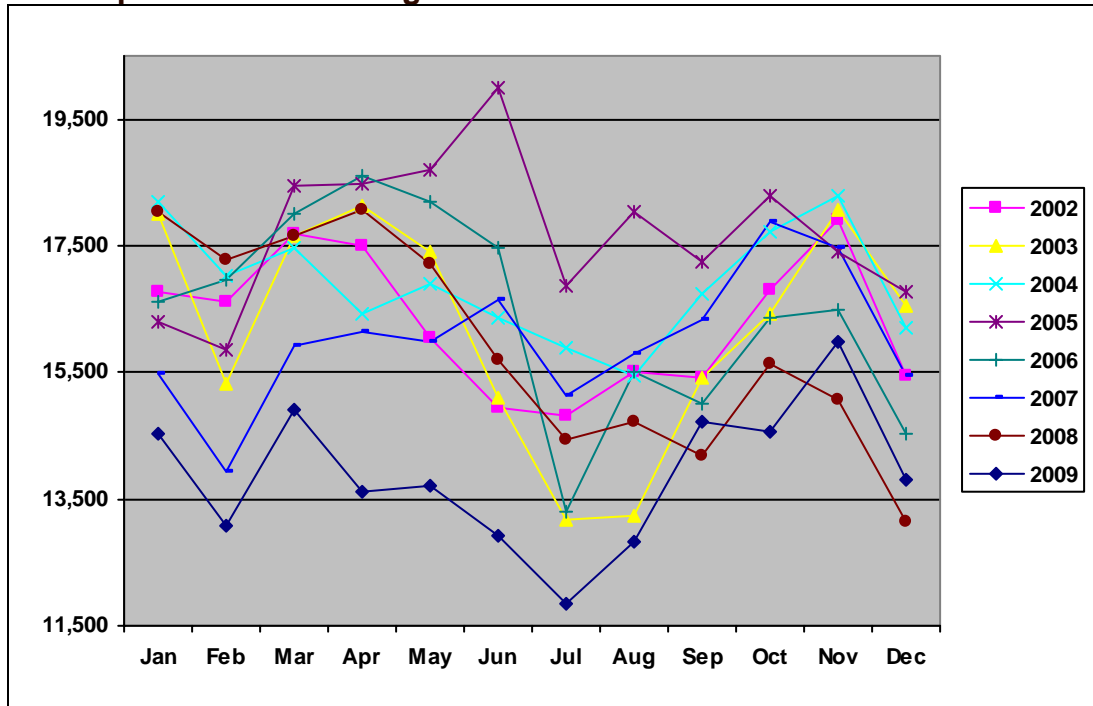
Visit the [Phoenix Sky Harbor International Airport](http://www.phoenixairport.com) Web site for more airport statistics.

# Scottsdale Airport

## Airport Facts

- Scottsdale Airport is one of the busiest single runway facilities in the nation.
- Approximately 10,000 passengers a year travel through Scottsdale Airport.
- The Scottsdale Airport covers 296 acres.
- The economic impact of Scottsdale Airport is more than \$140 million per year.

## Total Operations – Landings & Takeoffs



\*Total operations for Phoenix Sky Harbor International Airport in 2002 was 195,474.

## Scottsdale Airport – Total Operations

|                   | 2003           | 2004           | 2005           | 2006           | 2007           | 2008           | 2009           |
|-------------------|----------------|----------------|----------------|----------------|----------------|----------------|----------------|
| <b>Jan</b>        | 17,996         | 18,195         | 16,308         | 16,610         | 15,493         | 18,038         | 14,542         |
| <b>Feb</b>        | 15,316         | 17,034         | 15,870         | 16,972         | 13,932         | 17,278         | 13,085         |
| <b>Mar</b>        | 17,647         | 17,479         | 18,442         | 17,991         | 15,906         | 17,648         | 14,896         |
| <b>Apr</b>        | 18,117         | 16,436         | 18,492         | 18,601         | 16,141         | 18,056         | 13,601         |
| <b>May</b>        | 17,401         | 16,889         | 18,713         | 18,185         | 15,982         | 17,204         | 13,701         |
| <b>Jun</b>        | 15,105         | 16,353         | 19,986         | 17,459         | 16,662         | 15,689         | 12,910         |
| <b>Jul</b>        | 13,188         | 15,896         | 16,869         | 13,295         | 15,127         | 14,445         | 11,855         |
| <b>Aug</b>        | 13,251         | 15,436         | 18,043         | 15,497         | 15,800         | 14,729         | 12,824         |
| <b>Sep</b>        | 15,408         | 16,727         | 17,242         | 15,002         | 16,322         | 14,199         | 14,734         |
| <b>Oct</b>        | 16,442         | 17,732         | 18,305         | 16,365         | 17,873         | 15,641         | 14,564         |
| <b>Nov</b>        | 18,061         | 18,284         | 17,418         | 16,488         | 17,472         | 15,071         | 15,972         |
| <b>Dec</b>        | 16,540         | 16,220         | 16,786         | 14,518         | 15,451         | 13,152         | 13,814         |
| <b>Year Total</b> | <b>194,472</b> | <b>202,681</b> | <b>212,474</b> | <b>196,983</b> | <b>192,161</b> | <b>191,150</b> | <b>166,498</b> |

Visit the [Scottsdale Airport](#) Web site for more airport statistics.