

# Airport Statistics

## Phoenix Sky Harbor International Airport

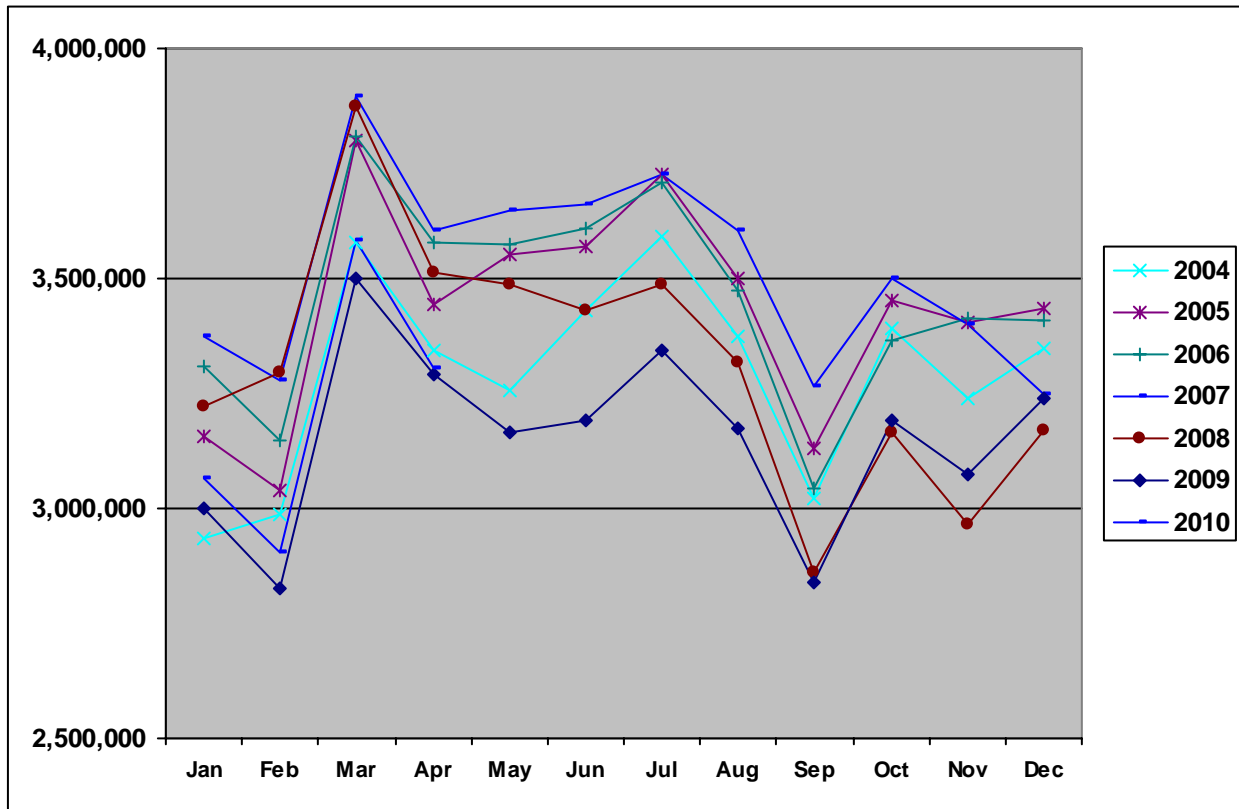
### Airport Facts

- In 2009, Sky Harbor International Airport was ranked 10th busiest airport in the U.S. and 14th busiest airport in the world for operations (take-offs and landings).
- In 2009, Sky Harbor ranked as the ninth busiest U.S. airport and the 17th busiest airport in the world for passenger traffic.
- Sky Harbor supports more than 1,200 takeoffs and landings daily.
- Sky Harbor is serviced by 19 commercial airlines and seven air cargo carriers.
- Sky Harbor has a \$90 million daily economic impact.
- Sky Harbor serves more than 85 domestic and 19 international cities with daily, nonstop flights

### Airport Rental Car Charges

Description	Amount	Airport Only Charges	All Local Companies Charge
<b>City of Phoenix Privilege License Tax</b> – liability is on the vendor, but they can pass on to the customer if they choose	4.0%		X
<b>Arizona Transaction Privilege Tax</b> – same as above, but from the state	5.6%		X
<b>Maricopa County Tax</b> – same as above, but from the county	0.7%		X
<b>State Auto License Fees</b> – state charges and passes on to renter	5.0%		X
<b>Maricopa County Rental Car Surcharge</b> – goes to Tourism & Sports Authority to fund Arizona Cardinals stadium	\$2.50/contract or 3.25% of gross proceeds (whichever is greater)		X
<b>Rental Car Company Airport Concession Recovery Fee</b> – liability is on the vendor, but they can pass on to the customer if they choose	10% of their gross sales as rent to airport (up to 11.11%)	X	
<b>Customer Facility Charge</b> – pays for the construction, maintenance and future capital improvements of the new Rental Car Center	\$6.00/day	X	

## Total Passenger Traffic



## Phoenix Sky Harbor International Airport – Total Passenger Traffic

	2004	2005	2006	2007	2008	2009	2010
<b>Jan</b>	2,936,387	3,154,466	3,310,363	3,375,510	3,220,307	2,999,552	3,065,207
<b>Feb</b>	2,985,842	3,038,182	3,146,086	3,276,621	3,295,273	2,824,825	2,904,452
<b>Mar</b>	3,576,506	3,799,760	3,810,342	3,894,704	3,872,745	3,498,397	3,584,403
<b>Apr</b>	3,344,797	3,444,413	3,578,243	3,606,348	3,513,114	3,290,532	3,305,001
<b>May</b>	3,258,036	3,550,168	3,573,731	3,649,151	3,486,012	3,163,737	
<b>Jun</b>	3,430,314	3,570,023	3,608,776	3,660,192	3,431,977	3,189,822	
<b>Jul</b>	3,591,777	3,726,031	3,709,773	3,725,800	3,486,964	3,344,775	
<b>Aug</b>	3,373,538	3,502,098	3,473,887	3,602,595	3,316,110	3,174,009	
<b>Sep</b>	3,022,417	3,130,240	3,041,533	3,265,912	2,861,437	2,838,459	
<b>Oct</b>	3,391,626	3,451,033	3,367,020	3,501,614	3,165,766	3,189,323	
<b>Nov</b>	3,239,654	3,404,530	3,412,552	3,399,292	2,965,180	3,072,834	
<b>Dec</b>	3,347,436	3,433,127	3,407,513	3,246,141	3,171,614	3,238,717	
<b>Year Total*</b>	<b>39,504,898</b>	<b>41,204,071</b>	<b>41,439,819</b>	<b>42,203,880</b>	<b>39,786,499</b>	<b>37,824,982</b>	

\*Total passenger traffic for Phoenix Sky Harbor International Airport in 2003 was 37,423,596

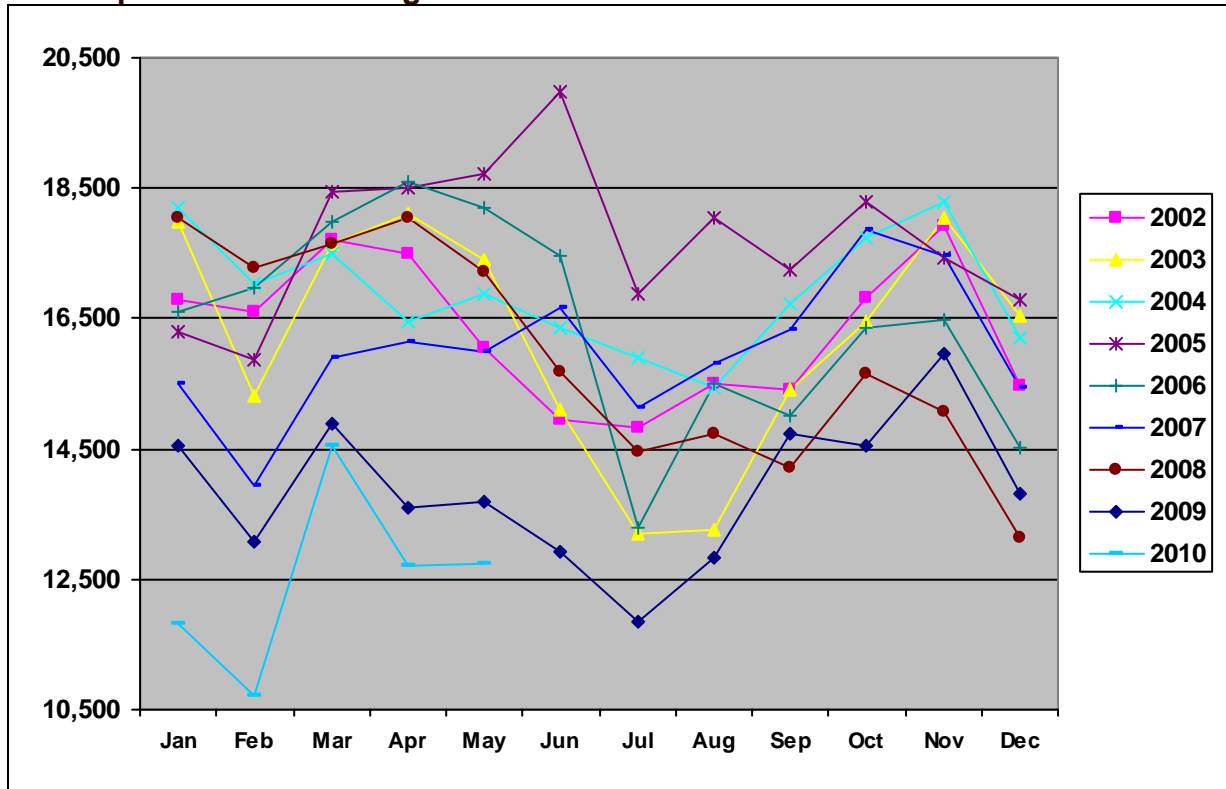
Visit the [Phoenix Sky Harbor International Airport](#) Web site for more airport statistics.

# Scottsdale Airport

## Airport Facts

- Scottsdale Airport is one of the busiest single runway facilities in the nation.
- Approximately 10,000 passengers a year travel through Scottsdale Airport.
- The Scottsdale Airport covers 296 acres.
- The economic impact of Scottsdale Airport is more than \$140 million per year.

## Total Operations – Landings & Takeoffs



\*Total operations for Scottsdale Airport in 2003 was 194,472.

## Scottsdale Airport – Total Operations

	2004	2005	2006	2007	2008	2009	2010
<b>Jan</b>	18,195	16,308	16,610	15,493	18,038	14,542	11,809
<b>Feb</b>	17,034	15,870	16,972	13,932	17,278	13,085	10,702
<b>Mar</b>	17,479	18,442	17,991	15,906	17,648	14,896	14,543
<b>Apr</b>	16,436	18,492	18,601	16,141	18,056	13,601	12,698
<b>May</b>	16,889	18,713	18,185	15,982	17,204	13,701	12,737
<b>Jun</b>	16,353	19,986	17,459	16,662	15,689	12,910	
<b>Jul</b>	15,896	16,869	13,295	15,127	14,445	11,855	
<b>Aug</b>	15,436	18,043	15,497	15,800	14,729	12,824	
<b>Sep</b>	16,727	17,242	15,002	16,322	14,199	14,734	
<b>Oct</b>	17,732	18,305	16,365	17,873	15,641	14,564	
<b>Nov</b>	18,284	17,418	16,488	17,472	15,071	15,972	
<b>Dec</b>	16,220	16,786	14,518	15,451	13,152	13,814	
<b>Year Total</b>	<b>202,681</b>	<b>212,474</b>	<b>196,983</b>	<b>192,161</b>	<b>191,150</b>	<b>166,498</b>	

Visit the [Scottsdale Airport](http://www.scottsdaleairport.com) Web site for more airport statistics.