

Airport Statistics

Phoenix Sky Harbor International Airport

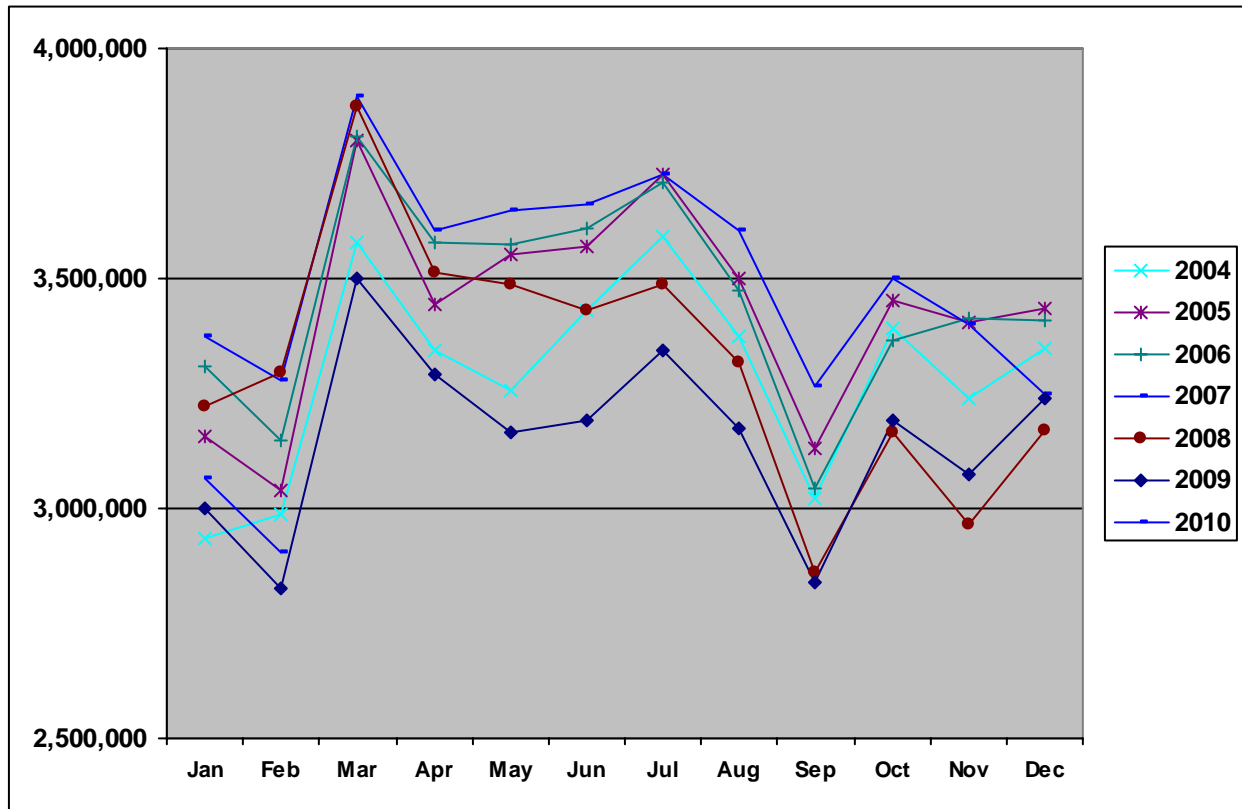
Airport Facts

- Phoenix Sky Harbor International Airport ranks as the ninth busiest airport in the world for aircraft operations.
- Sky Harbor ranks as the ninth busiest U.S. airport and the 17th busiest airport in the world for passenger traffic.
- Sky Harbor supports nearly 1,500 takeoffs and landings daily.
- Sky Harbor is serviced by 19 commercial airlines and seven air cargo carriers.
- Sky Harbor has a \$90 million daily economic impact.
- Sky Harbor serves nearly 100 domestic and 13 international cities with daily flights, most of them nonstop. International service includes flights to the United Kingdom, Canada, Costa Rica and Mexico.

Airport Rental Car Charges

Description	Amount	Airport Only Charges	All Local Companies Charge
City of Phoenix Privilege License Tax – liability is on the vendor, but they can pass on to the customer if they choose	4.0%		X
Arizona Transaction Privilege Tax – same as above, but from the state	5.6%		X
Maricopa County Tax – same as above, but from the county	0.7%		X
State Auto License Fees – state charges and passes on to renter	5.0%		X
Maricopa County Rental Car Surcharge – goes to Tourism & Sports Authority to fund Arizona Cardinals stadium	\$2.50/contract or 3.25% of gross proceeds (whichever is greater)		X
Rental Car Company Airport Concession Recovery Fee – liability is on the vendor, but they can pass on to the customer if they choose	10% of their gross sales as rent to airport (up to 11.11%)	X	
Customer Facility Charge – pays for the construction, maintenance and future capital improvements of the new Rental Car Center	\$6.00/day	X	

Total Passenger Traffic



Phoenix Sky Harbor International Airport – Total Passenger Traffic

	2004	2005	2006	2007	2008	2009	2010
Jan	2,936,387	3,154,466	3,310,363	3,375,510	3,220,307	2,999,552	3,065,207
Feb	2,985,842	3,038,182	3,146,086	3,276,621	3,295,273	2,824,825	2,904,452
Mar	3,576,506	3,799,760	3,810,342	3,894,704	3,872,745	3,498,397	
Apr	3,344,797	3,444,413	3,578,243	3,606,348	3,513,114	3,290,532	
May	3,258,036	3,550,168	3,573,731	3,649,151	3,486,012	3,163,737	
Jun	3,430,314	3,570,023	3,608,776	3,660,192	3,431,977	3,189,822	
Jul	3,591,777	3,726,031	3,709,773	3,725,800	3,486,964	3,344,775	
Aug	3,373,538	3,502,098	3,473,887	3,602,595	3,316,110	3,174,009	
Sep	3,022,417	3,130,240	3,041,533	3,265,912	2,861,437	2,838,459	
Oct	3,391,626	3,451,033	3,367,020	3,501,614	3,165,766	3,189,323	
Nov	3,239,654	3,404,530	3,412,552	3,399,292	2,965,180	3,072,834	
Dec	3,347,436	3,433,127	3,407,513	3,246,141	3,171,614	3,238,717	
Year Total*	39,504,898	41,204,071	41,439,819	42,203,880	39,786,499	37,824,982	

*Total passenger traffic for Phoenix Sky Harbor International Airport in 2003 was 37,423,596

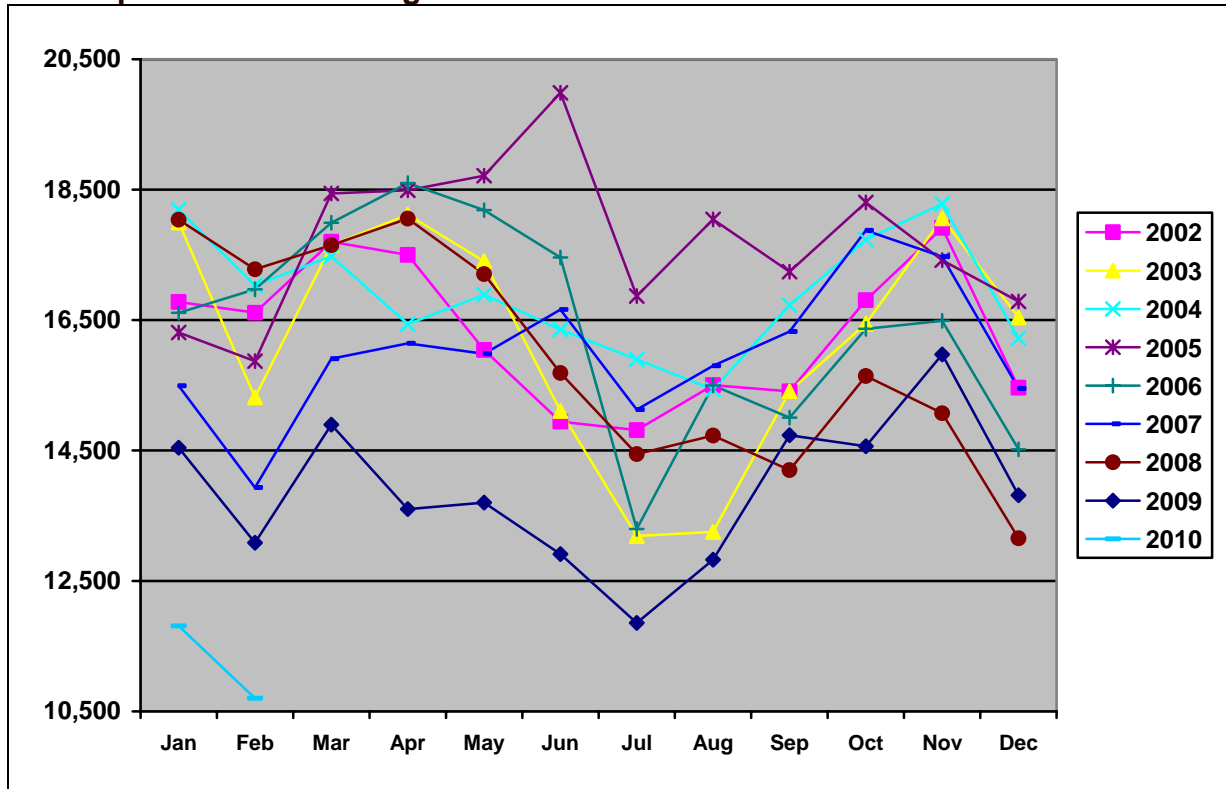
Visit the [Phoenix Sky Harbor International Airport](#) Web site for more airport statistics.

Scottsdale Airport

Airport Facts

- Scottsdale Airport is one of the busiest single runway facilities in the nation.
- Approximately 10,000 passengers a year travel through Scottsdale Airport.
- The Scottsdale Airport covers 296 acres.
- The economic impact of Scottsdale Airport is more than \$140 million per year.

Total Operations – Landings & Takeoffs



*Total operations for Scottsdale Airport in 2003 was 194,472.

Scottsdale Airport – Total Operations

	2004	2005	2006	2007	2008	2009	2010
Jan	18,195	16,308	16,610	15,493	18,038	14,542	11,809
Feb	17,034	15,870	16,972	13,932	17,278	13,085	10,702
Mar	17,479	18,442	17,991	15,906	17,648	14,896	
Apr	16,436	18,492	18,601	16,141	18,056	13,601	
May	16,889	18,713	18,185	15,982	17,204	13,701	
Jun	16,353	19,986	17,459	16,662	15,689	12,910	
Jul	15,896	16,869	13,295	15,127	14,445	11,855	
Aug	15,436	18,043	15,497	15,800	14,729	12,824	
Sep	16,727	17,242	15,002	16,322	14,199	14,734	
Oct	17,732	18,305	16,365	17,873	15,641	14,564	
Nov	18,284	17,418	16,488	17,472	15,071	15,972	
Dec	16,220	16,786	14,518	15,451	13,152	13,814	
Year Total	202,681	212,474	196,983	192,161	191,150	166,498	

Visit the [Scottsdale Airport](http://www.scottsdaleairport.com) Web site for more airport statistics.