

# Airport Statistics

## Phoenix Sky Harbor International Airport

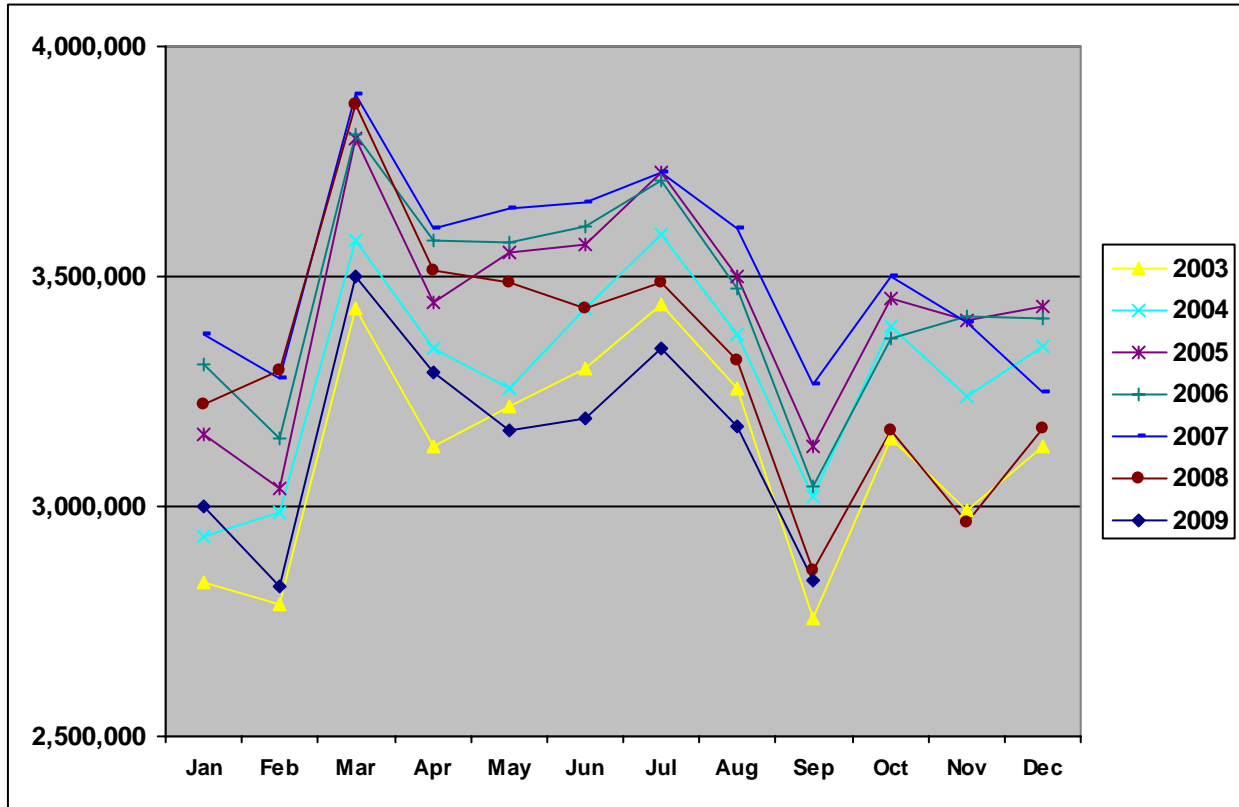
### Airport Facts

- Phoenix Sky Harbor International Airport ranks as the ninth busiest airport in the world for aircraft operations.
- Sky Harbor ranks as the ninth busiest U.S. airport and the 17th busiest airport in the world for passenger traffic.
- Sky Harbor supports nearly 1,500 takeoffs and landings daily.
- Sky Harbor is serviced by 19 commercial airlines and seven air cargo carriers.
- Sky Harbor has a \$90 million daily economic impact.
- Sky Harbor serves nearly 100 domestic and 13 international cities with daily flights, most of them nonstop. International service includes flights to the United Kingdom, Canada, Costa Rica and Mexico.

### Airport Rental Car Charges

Description	Amount	Airport Only Charges	All Local Companies Charge
<b>City of Phoenix Privilege License Tax</b> – liability is on the vendor, but they can pass on to the customer if they choose	4.0%		X
<b>Arizona Transaction Privilege Tax</b> – same as above, but from the state	5.6%		X
<b>Maricopa County Tax</b> – same as above, but from the county	0.7%		X
<b>State Auto License Fees</b> – state charges and passes on to renter	5.0%		X
<b>Maricopa County Rental Car Surcharge</b> – goes to Tourism & Sports Authority to fund Arizona Cardinals stadium	\$2.50/contract or 3.25% of gross proceeds (whichever is greater)		X
<b>Rental Car Company Airport Concession Recovery Fee</b> – liability is on the vendor, but they can pass on to the customer if they choose	10% of their gross sales as rent to airport (up to 11.11%)	X	
<b>Customer Facility Charge</b> – pays for the construction, maintenance and future capital improvements of the new Rental Car Center	\$6.00/day	X	

## Total Passenger Traffic



## Phoenix Sky Harbor International Airport – Total Passenger Traffic

	2003	2004	2005	2006	2007	2008	2009
<b>Jan</b>	2,834,808	2,936,387	3,154,466	3,310,363	3,375,510	3,220,307	2,999,552
<b>Feb</b>	2,787,722	2,985,842	3,038,182	3,146,086	3,276,621	3,295,273	2,824,825
<b>Mar</b>	3,430,332	3,576,506	3,799,760	3,810,342	3,894,704	3,872,745	3,498,397
<b>Apr</b>	3,129,194	3,344,797	3,444,413	3,578,243	3,606,348	3,513,114	3,290,532
<b>May</b>	3,218,378	3,258,036	3,550,168	3,573,731	3,649,151	3,486,012	3,163,737
<b>Jun</b>	3,301,470	3,430,314	3,570,023	3,608,776	3,660,192	3,431,977	3,189,822
<b>Jul</b>	3,439,197	3,591,777	3,726,031	3,709,773	3,725,800	3,486,964	3,344,775
<b>Aug</b>	3,255,811	3,373,538	3,502,098	3,473,887	3,602,595	3,316,110	3,174,009
<b>Sep</b>	2,758,216	3,022,417	3,130,240	3,041,533	3,265,912	2,861,437	2,838,459
<b>Oct</b>	3,147,895	3,391,626	3,451,033	3,367,020	3,501,614	3,165,766	
<b>Nov</b>	2,990,789	3,239,654	3,404,530	3,412,552	3,399,292	2,965,180	
<b>Dec</b>	3,129,784	3,347,436	3,433,127	3,407,513	3,246,141	3,171,614	
<b>Year Total*</b>	<b>37,423,596</b>	<b>39,504,898</b>	<b>41,204,071</b>	<b>41,439,819</b>	<b>42,203,880</b>	<b>39,786,499</b>	

\*Total passenger traffic for Phoenix Sky Harbor International Airport in 2002 was 35,547,432

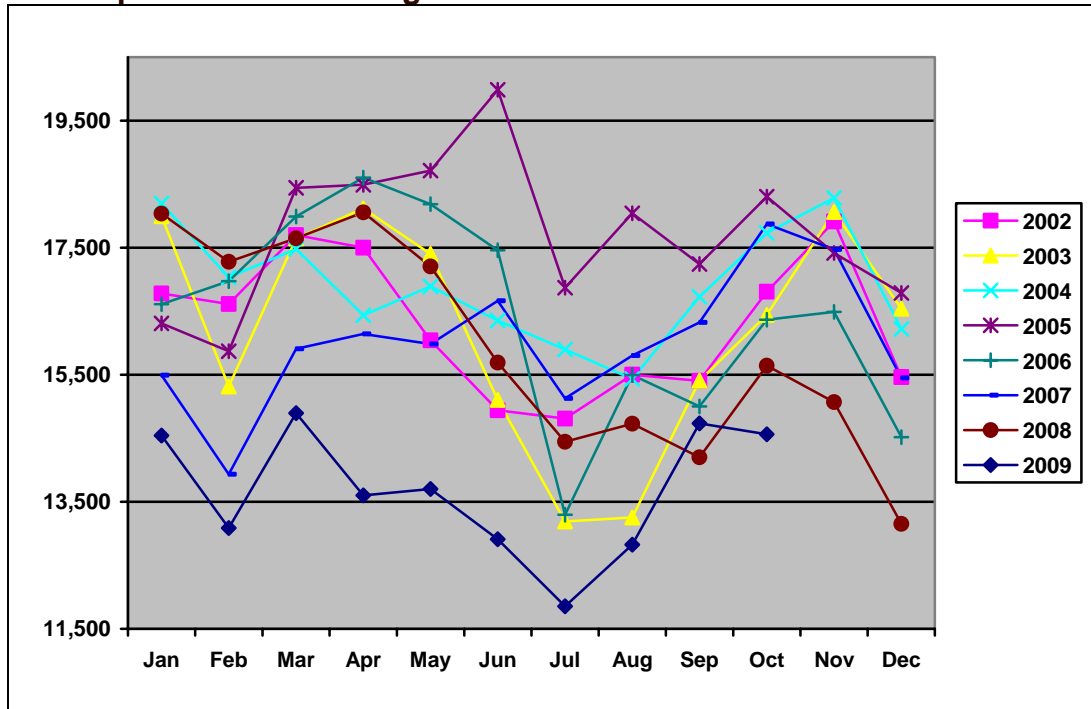
Visit the [Phoenix Sky Harbor International Airport](#) Web site for more airport statistics.

# Scottsdale Airport

## Airport Facts

- Scottsdale Airport is one of the busiest single runway facilities in the nation.
- Approximately 10,000 passengers a year travel through Scottsdale Airport.
- The Scottsdale Airport covers 296 acres.
- The economic impact of Scottsdale Airport is more than \$140 million per year.

## Total Operations – Landings & Takeoffs



\*Total operations for Phoenix Sky Harbor International Airport in 2002 was 195,474.

## Scottsdale Airport – Total Operations

	2003	2004	2005	2006	2007	2008	2009
<b>Jan</b>	17,996	18,195	16,308	16,610	15,493	18,038	14,542
<b>Feb</b>	15,316	17,034	15,870	16,972	13,932	17,278	13,085
<b>Mar</b>	17,647	17,479	18,442	17,991	15,906	17,648	14,896
<b>Apr</b>	18,117	16,436	18,492	18,601	16,141	18,056	13,601
<b>May</b>	17,401	16,889	18,713	18,185	15,982	17,204	13,701
<b>Jun</b>	15,105	16,353	19,986	17,459	16,662	15,689	12,910
<b>Jul</b>	13,188	15,896	16,869	13,295	15,127	14,445	11,855
<b>Aug</b>	13,251	15,436	18,043	15,497	15,800	14,729	12,824
<b>Sep</b>	15,408	16,727	17,242	15,002	16,322	14,199	14,734
<b>Oct</b>	16,442	17,732	18,305	16,365	17,873	15,641	14,564
<b>Nov</b>	18,061	18,284	17,418	16,488	17,472	15,071	
<b>Dec</b>	16,540	16,220	16,786	14,518	15,451	13,152	
<b>Year Total</b>	<b>194,472</b>	<b>202,681</b>	<b>212,474</b>	<b>196,983</b>	<b>192,161</b>	<b>191,150</b>	

Visit the [Scottsdale Airport](#) Web site for more airport statistics.