

Airport Statistics

Phoenix Sky Harbor International Airport

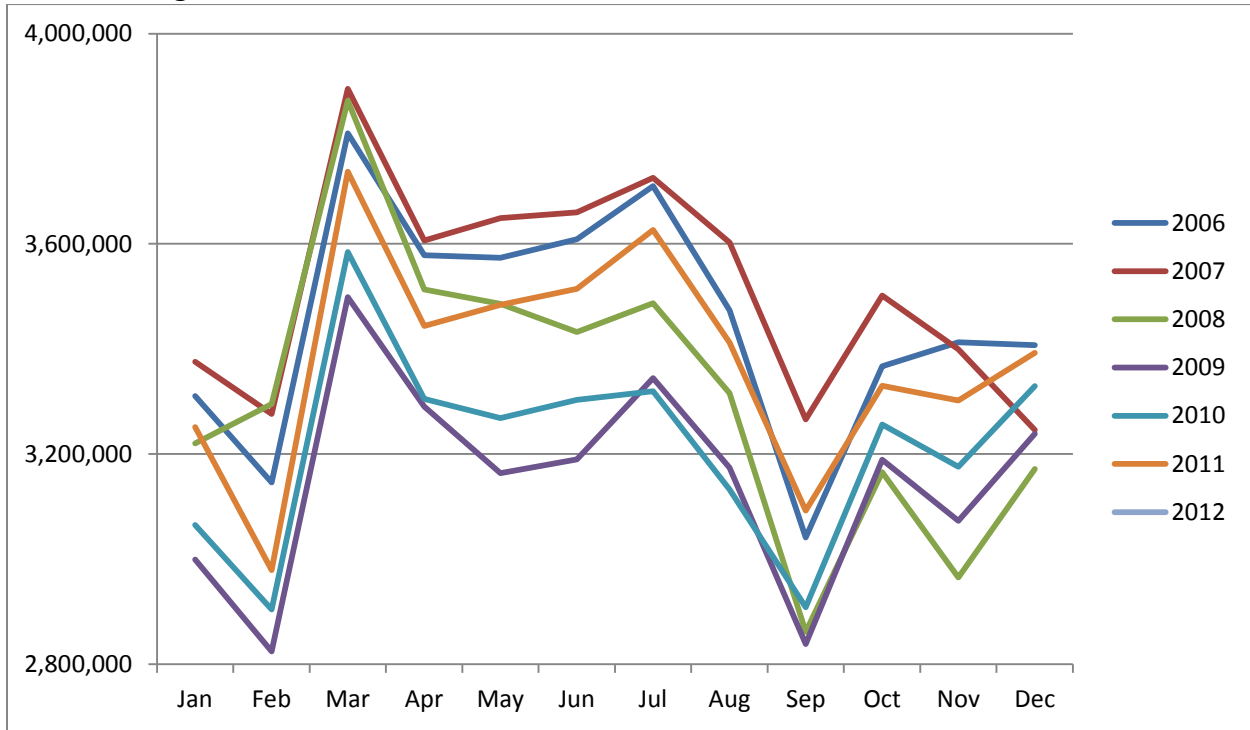
Airport Facts

- In 2009, Sky Harbor International Airport was ranked 10th busiest airport in the U.S. and 14th busiest airport in the world for operations (take-offs and landings).
- In 2009, Sky Harbor ranked as the ninth busiest U.S. airport and the 17th busiest airport in the world for passenger traffic.
- Sky Harbor supports more than 1,200 takeoffs and landings daily.
- Sky Harbor is serviced by 19 commercial airlines and seven air cargo carriers.
- Sky Harbor has a \$90 million daily economic impact.
- Sky Harbor serves more than 85 domestic and 19 international cities with daily, nonstop flights

Airport Rental Car Charges

Description	Amount	Airport Only Charges	All Local Companies Charge
City of Phoenix Privilege License Tax – liability is on the vendor, but they can pass on to the customer if they choose	4.0%		X
Arizona Transaction Privilege Tax – same as above, but from the state	5.6%		X
Maricopa County Tax – same as above, but from the county	0.7%		X
State Auto License Fees – state charges and passes on to renter	5.0%		X
Maricopa County Rental Car Surcharge – goes to Tourism & Sports Authority to fund Arizona Cardinals stadium	\$2.50/contract or 3.25% of gross proceeds (whichever is greater)		X
Rental Car Company Airport Concession Recovery Fee – liability is on the vendor, but they can pass on to the customer if they choose	10% of their gross sales as rent to airport (up to 11.11%)	X	
Customer Facility Charge – pays for the construction, maintenance and future capital improvements of the new Rental Car Center	\$6.00/day	X	

Total Passenger Traffic



Phoenix Sky Harbor International Airport – Total Passenger Traffic

	2006	2007	2008	2009	2010	2011	2012
Jan	3,310,363	3,375,510	3,220,307	2,999,552	3,065,207	3,251,283	3,202,418
Feb	3,146,086	3,276,621	3,295,273	2,824,825	2,904,452	2,979,417	
Mar	3,810,342	3,894,704	3,872,745	3,498,397	3,584,403	3,737,564	
Apr	3,578,243	3,606,348	3,513,114	3,290,532	3,305,001	3,443,988	
May	3,573,731	3,649,151	3,486,012	3,163,737	3,268,611	3,483,968	
Jun	3,608,776	3,660,192	3,431,977	3,189,822	3,303,007	3,514,726	
Jul	3,709,773	3,725,800	3,486,964	3,344,775	3,319,701	3,626,484	
Aug	3,473,887	3,602,595	3,316,110	3,174,009	3,132,493	3,412,048	
Sep	3,041,533	3,265,912	2,861,437	2,838,459	2,908,336	3,092,158	
Oct	3,367,020	3,501,614	3,165,766	3,189,323	3,256,306	3,329,709	
Nov	3,412,552	3,399,292	2,965,180	3,072,834	3,175,863	3,301,941	
Dec	3,407,513	3,246,141	3,171,614	3,238,717	3,329,029	3,392,391	
Year Total*	41,439,819	42,203,880	39,786,499	37,824,982	38,554,530	40,591,948	

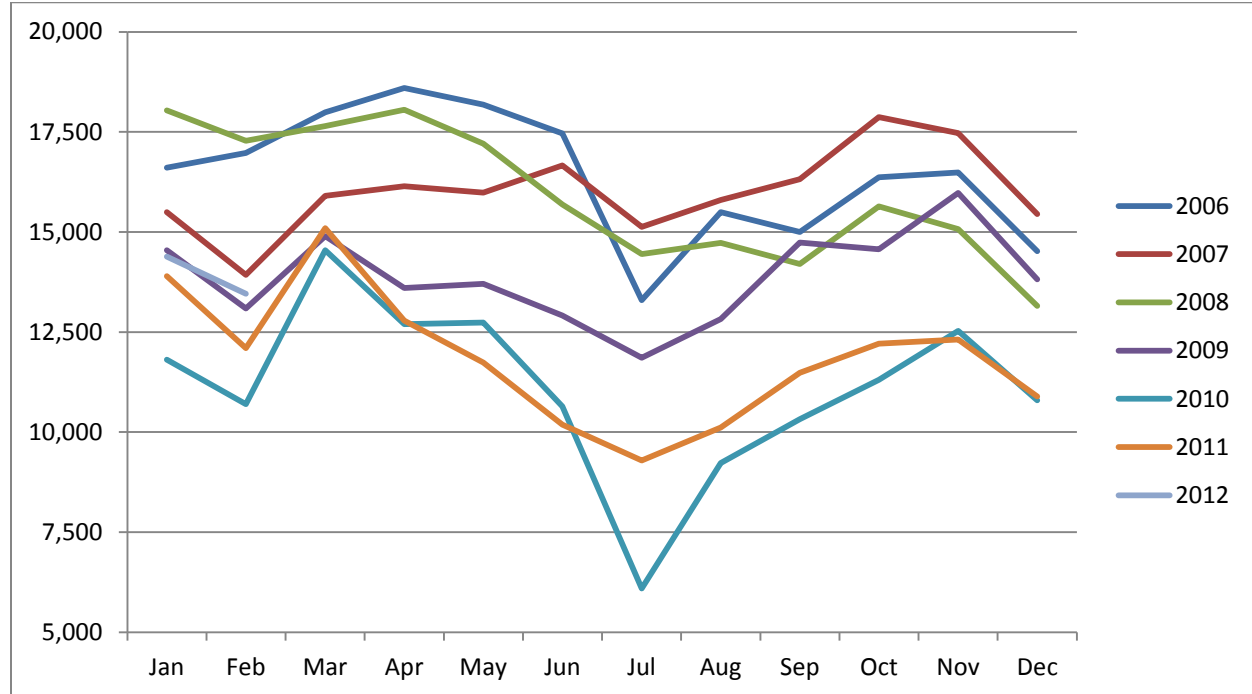
Visit the [Phoenix Sky Harbor International Airport](#) website for more airport statistics.

Scottsdale Airport

Airport Facts

- Scottsdale Airport is one of the busiest single runway facilities in the nation.
- Approximately 10,000 passengers a year travel through Scottsdale Airport.
- The Scottsdale Airport covers 296 acres.
- The economic impact of Scottsdale Airport is more than \$140 million per year.

Total Operations – Landings & Takeoffs



Scottsdale Airport – Total Operations

	2006	2007	2008	2009	2010	2011	2012
Jan	16,610	15,493	18,038	14,542	11,809	13,898	14,387
Feb	16,972	13,932	17,278	13,085	10,702	12,098	13,459
Mar	17,991	15,906	17,648	14,896	14,543	15,098	
Apr	18,601	16,141	18,056	13,601	12,698	12,788	
May	18,185	15,982	17,204	13,701	12,737	11,735	
Jun	17,459	16,662	15,689	12,910	10,644	10,186	
Jul	13,295	15,127	14,445	11,855	6,096	9,289	
Aug	15,497	15,800	14,729	12,824	9,229	10,118	
Sep	15,002	16,322	14,199	14,734	10,325	11,484	
Oct	16,365	17,873	15,641	14,564	11,307	12,212	
Nov	16,488	17,472	15,071	15,972	12,533	12,312	
Dec	14,518	15,451	13,152	13,814	10,796	10,890	
Year Total	196,983	192,161	191,150	166,498	133,419	142,108	

Visit the [Scottsdale Airport](#) Web site for more airport statistics.