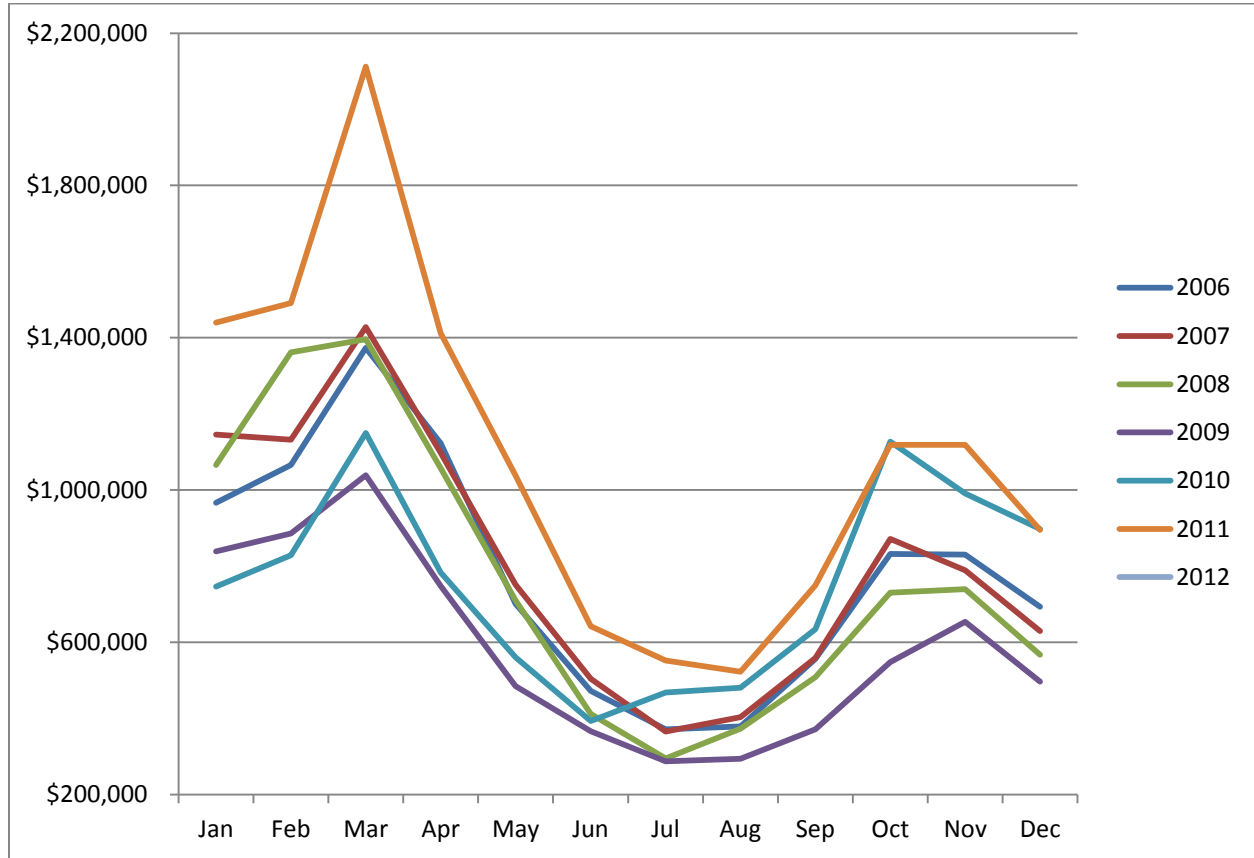


## Scottsdale Bed Tax Collections 2006-2012 (to date)



**Scottsdale Bed Tax Collections**

	2006	2007	2008	2009	2010	2011	2012
<b>Jan</b>	\$966,366	\$1,145,222	\$1,065,634	\$838,870	\$746,527	\$1,439,693	\$1,373,586
<b>Feb</b>	\$1,065,586	\$1,132,446	\$1,361,716	\$886,188	\$828,485	\$1,490,790	
<b>Mar</b>	\$1,373,686	\$1,427,745	\$1,395,675	\$1,039,177	\$1,150,123	\$2,112,133	
<b>Apr</b>	\$1,123,309	\$1,098,091	\$1,057,041	\$748,393	\$783,160	\$1,412,304	
<b>May</b>	\$701,287	\$751,622	\$710,413	\$484,786	\$560,558	\$1,038,318	
<b>Jun</b>	\$472,291	\$504,334	\$412,163	\$366,474	\$393,529	\$642,135	
<b>Jul</b>	\$371,782	\$365,852	\$294,899	\$287,445	\$468,069	\$551,811	
<b>Aug</b>	\$379,088	\$403,225	\$373,040	\$293,820	\$481,170	\$522,553	
<b>Sep</b>	\$556,836	\$558,736	\$508,832	\$371,649	\$634,850	\$749,610	
<b>Oct</b>	\$832,095	\$871,790	\$730,114	\$547,610	\$1,126,767	\$1,118,386	
<b>Nov</b>	\$830,766	\$789,492	\$739,333	\$653,810	\$990,792	\$1,118,739	
<b>Dec</b>	\$693,215	\$629,853	\$567,325	\$496,390	\$897,368	\$895,391	
<b>Annual Total</b>	\$9,366,307	\$9,678,408	\$9,216,185	\$7,014,612	\$9,061,398	\$13,091,863	

Source: City of Scottsdale Business & Economic Vitality Department